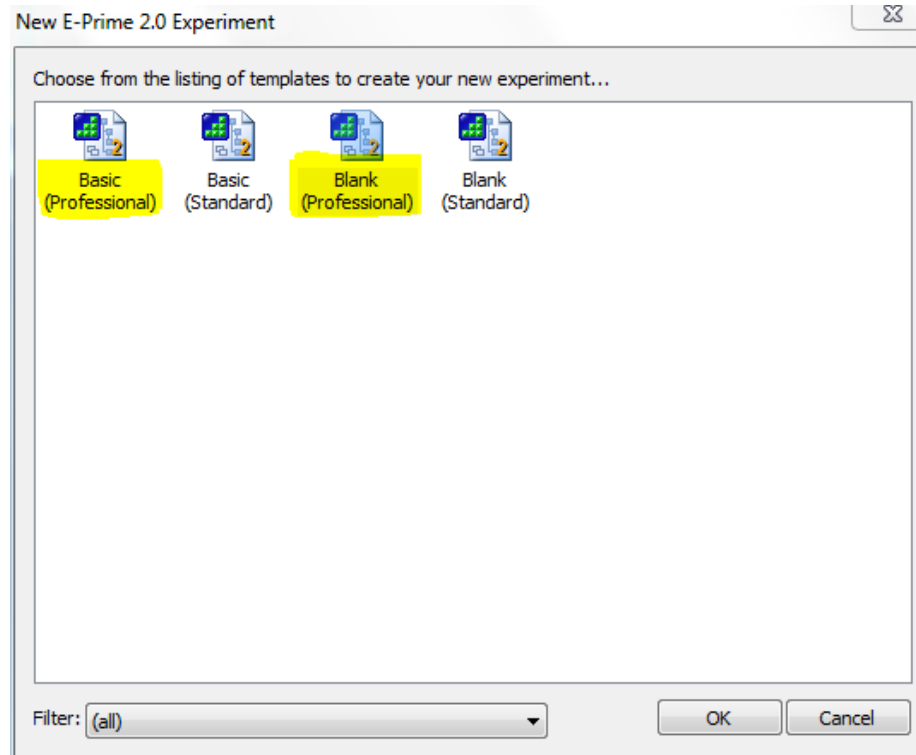


fNIRS Triggers

How to add triggers to E-Prime
experimental paradigms

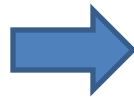
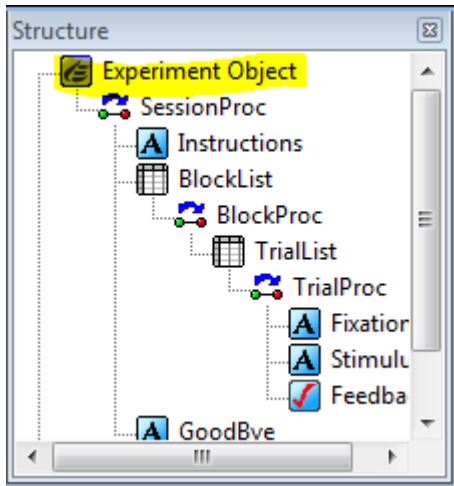
Maggie Ugolini 1/28/14

Creating your E-Prime Experiment

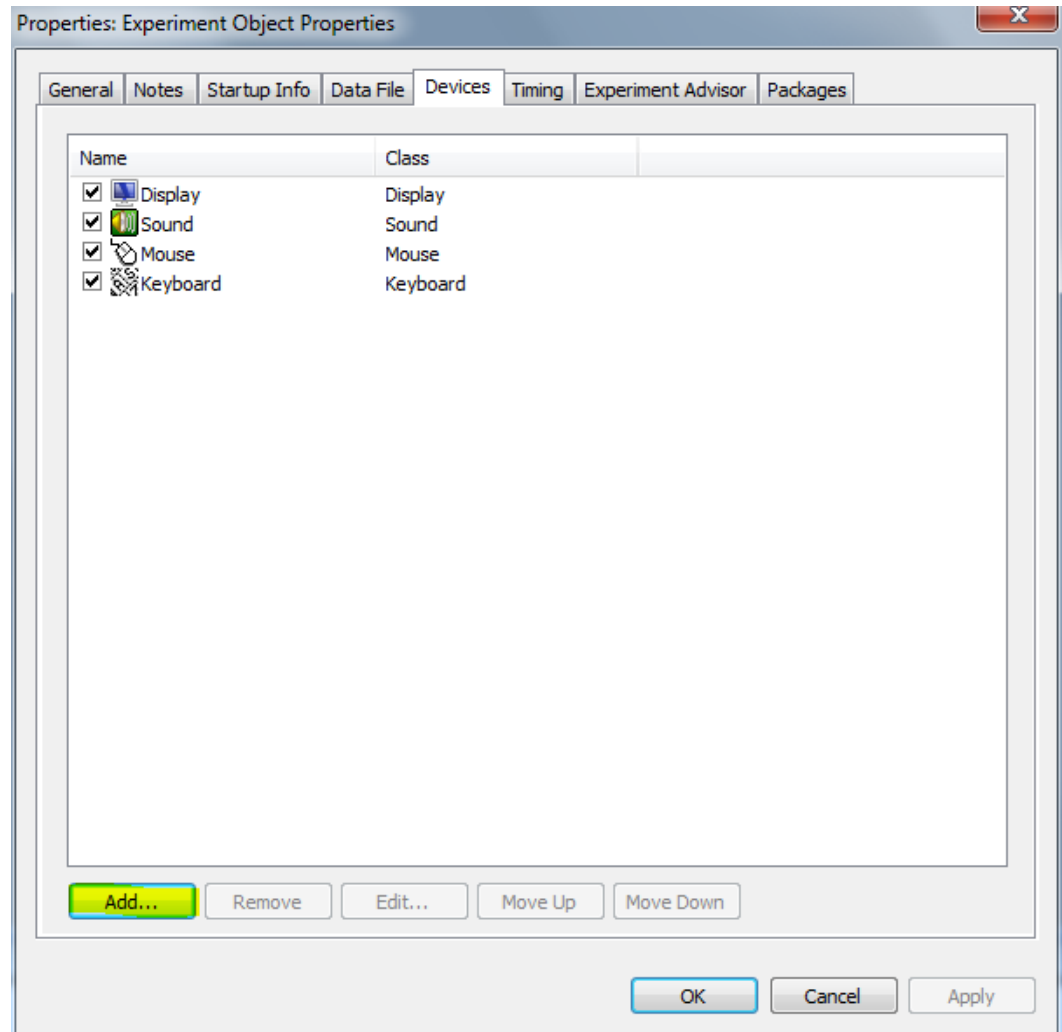


Be sure to choose a “professional” template (either blank or basic) when starting work with E-Prime

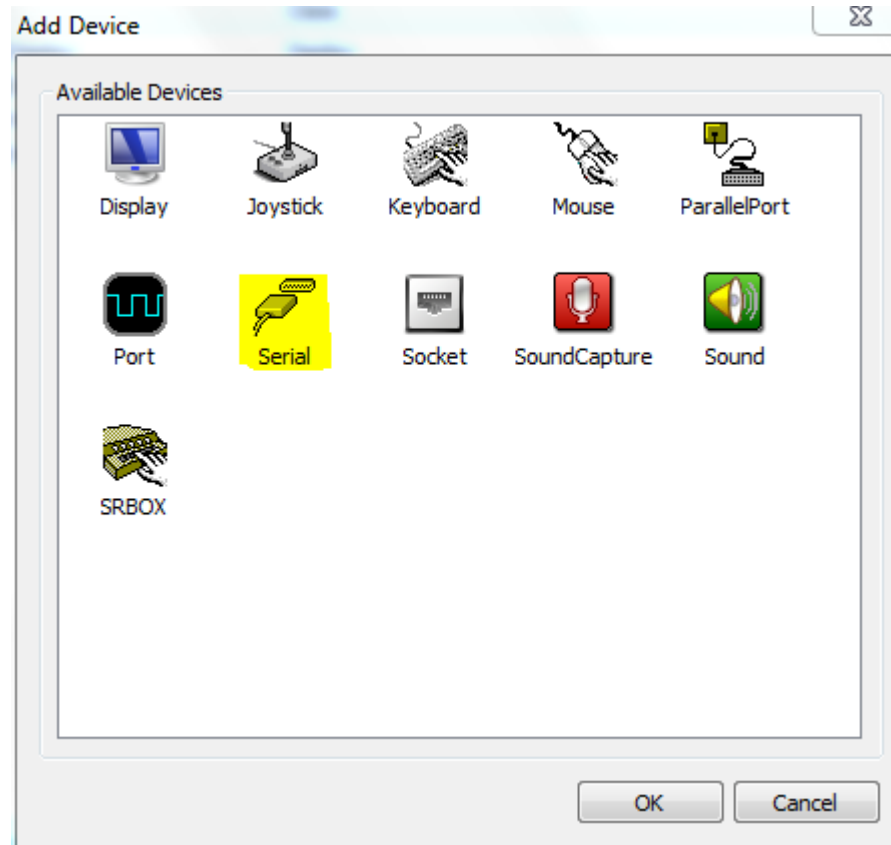
Adding the Serial Port Device



Double click on “experiment object,” then click the devices tab and “Add...”

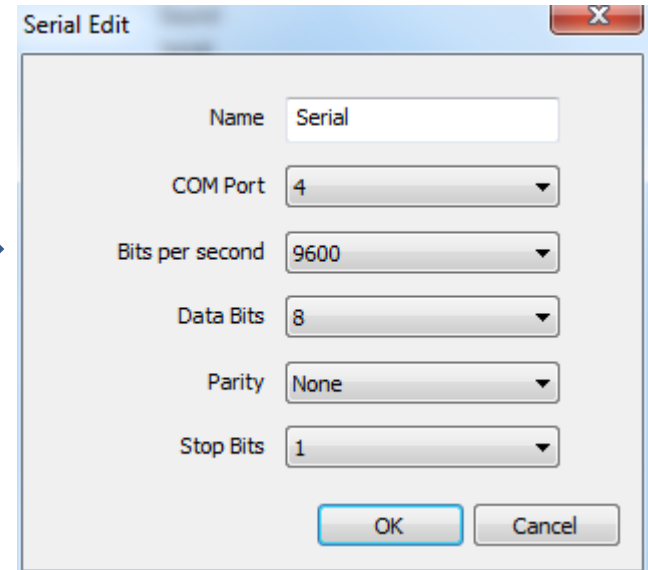
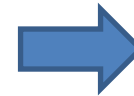
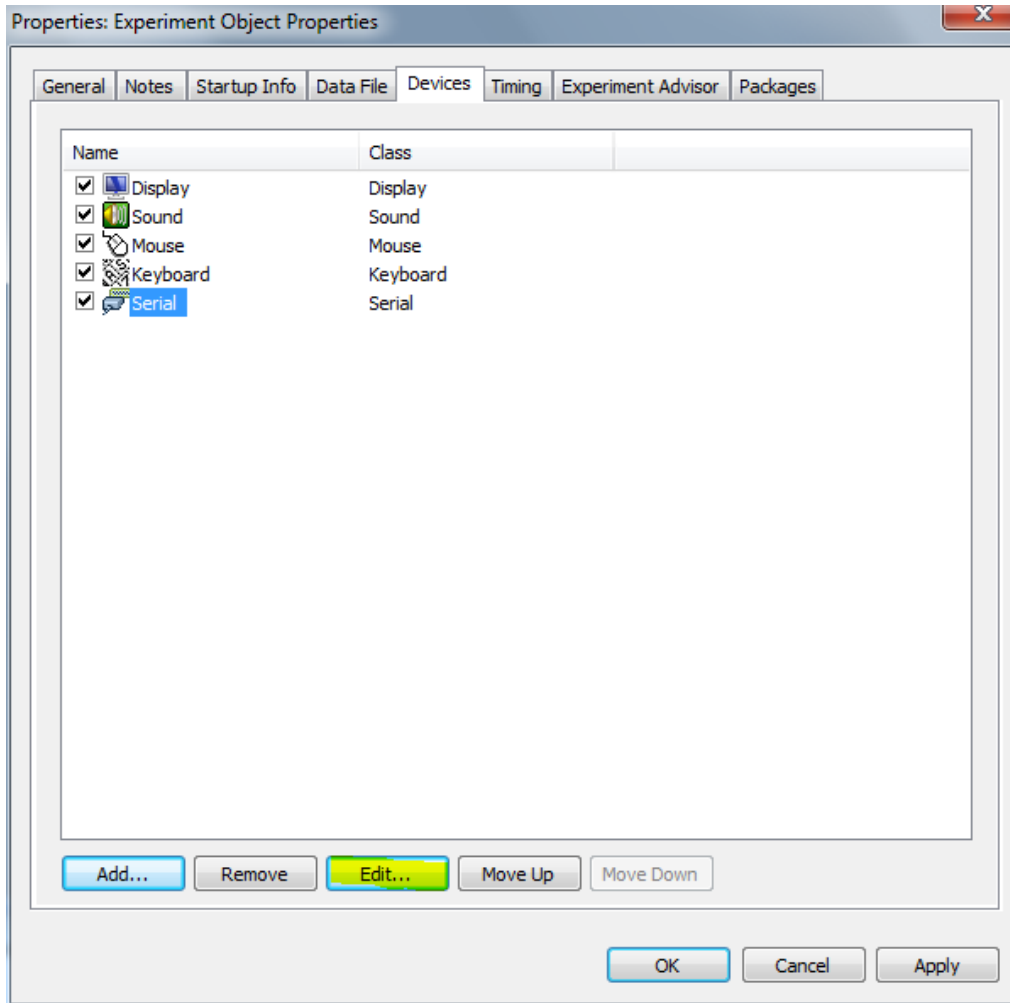


Adding the Serial Port Device



Select the “Serial” icon and click OK

Configuring the Serial Port Device



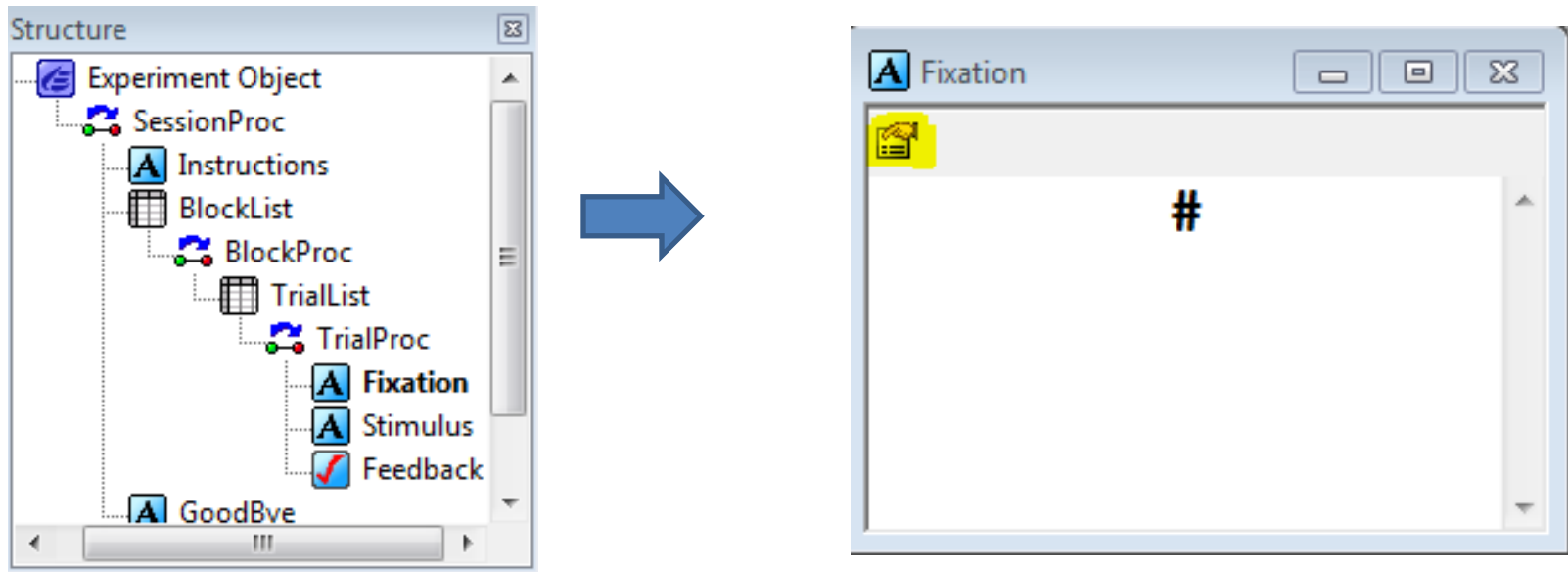
Select "Serial" and click "Edit..." Make sure that your parameters match the values in the "Serial Edit" window above

Determine what you want to trigger



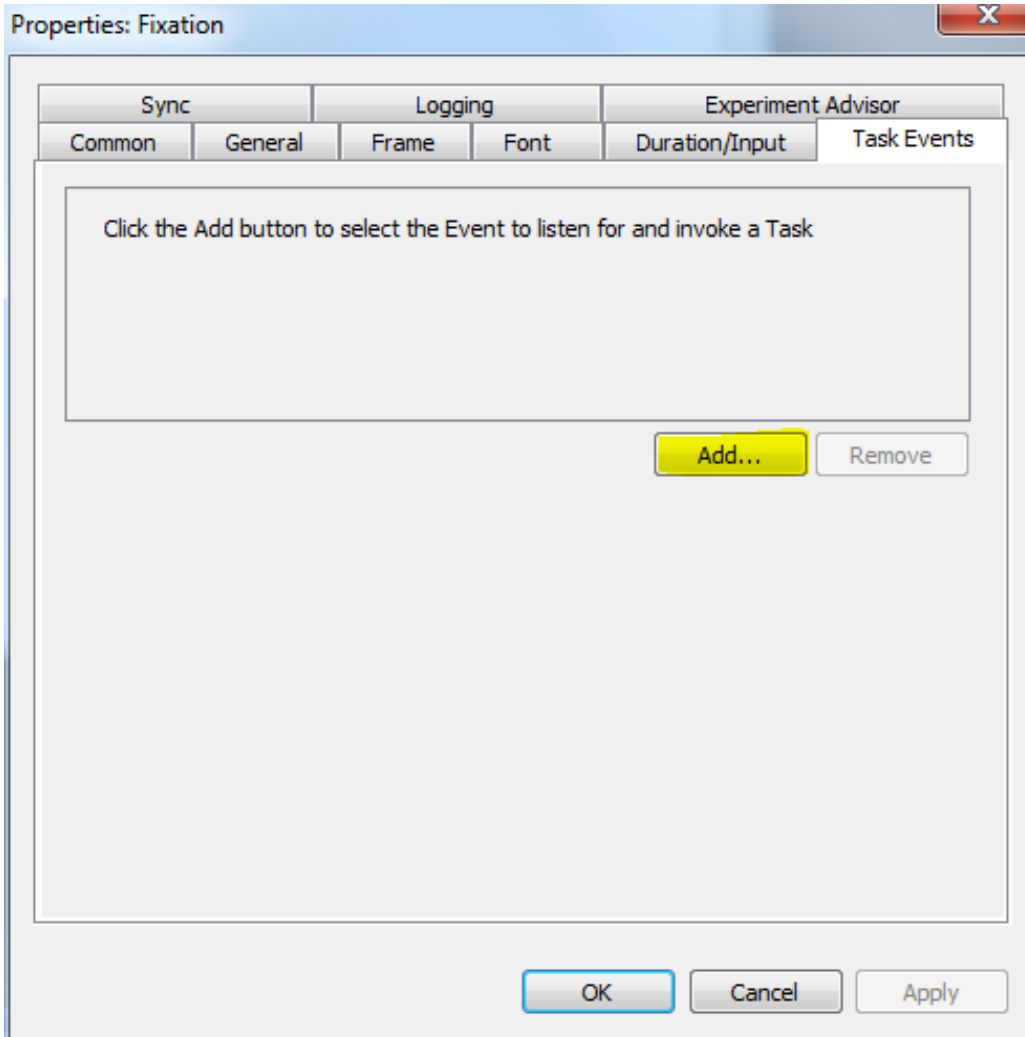
Triggers can be sent relative to a various events associated with the above E-Prime objects

Configuring the Serial Port Device



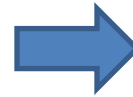
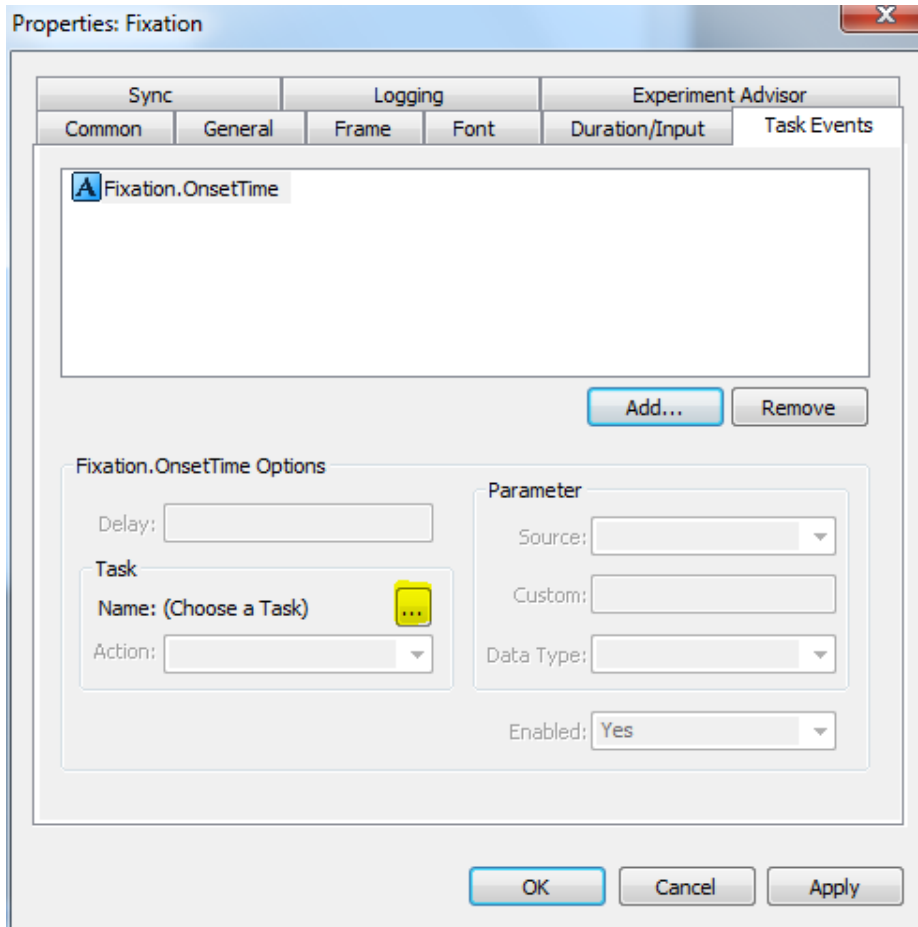
Double click the object in the structure that you want to add triggers to. Click the properties icon in the window that pops up.

Adding a Trigger



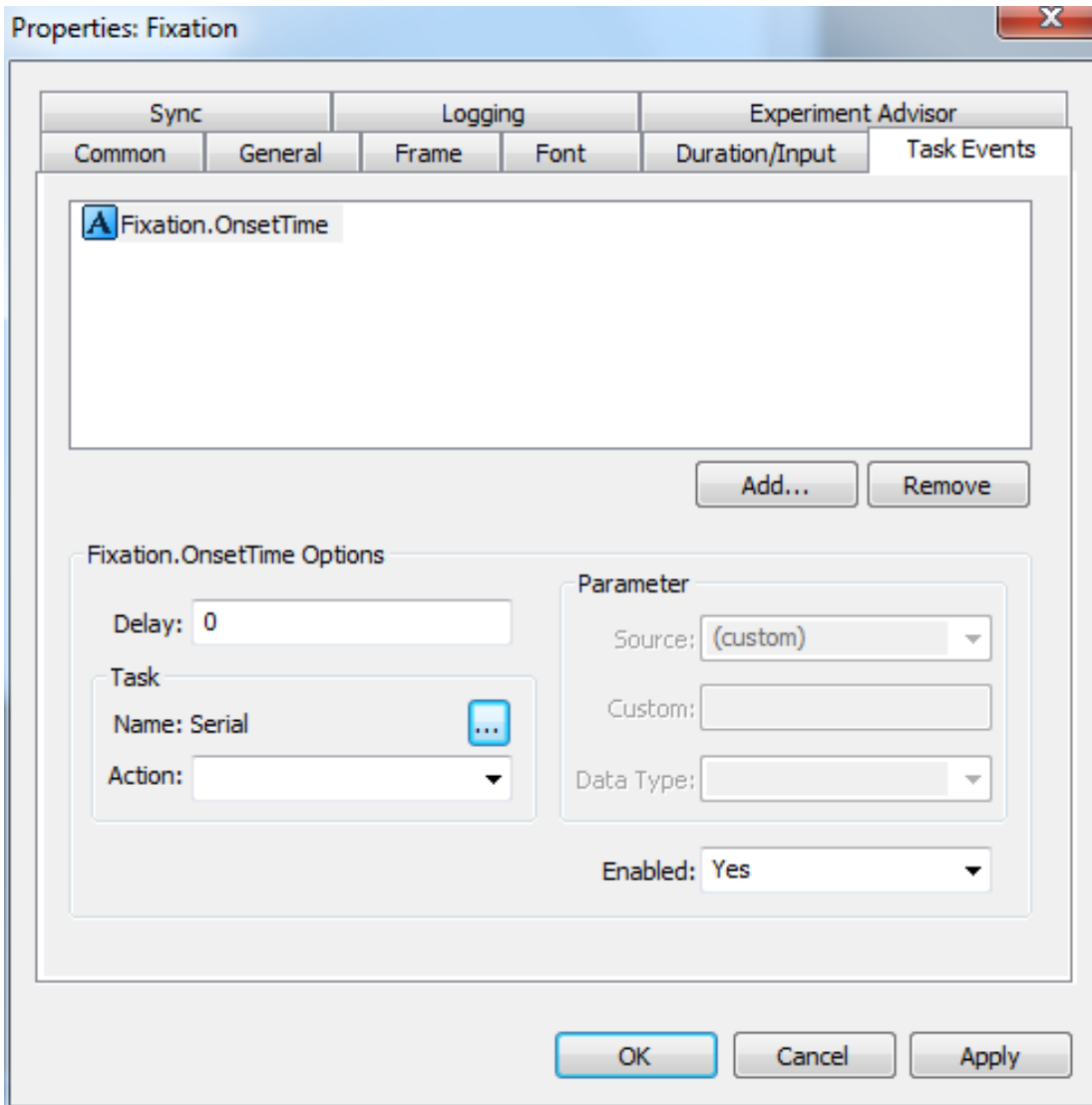
Click the task events tab in the window that pops up, then click "Add..."

Adding a Trigger



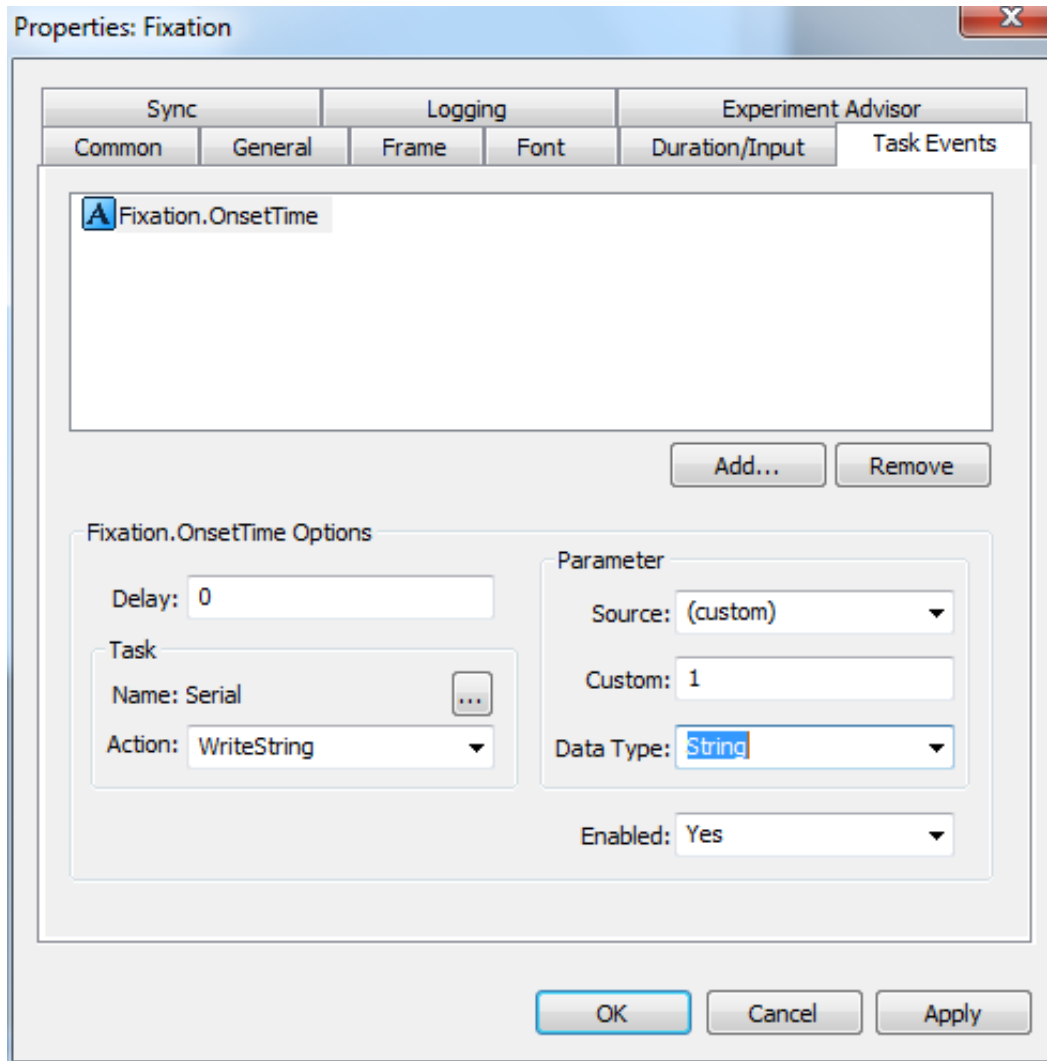
Now click the “...” in the Task Events tab and add the “Serial” task device

Adding a Trigger



Your window should now look something like this

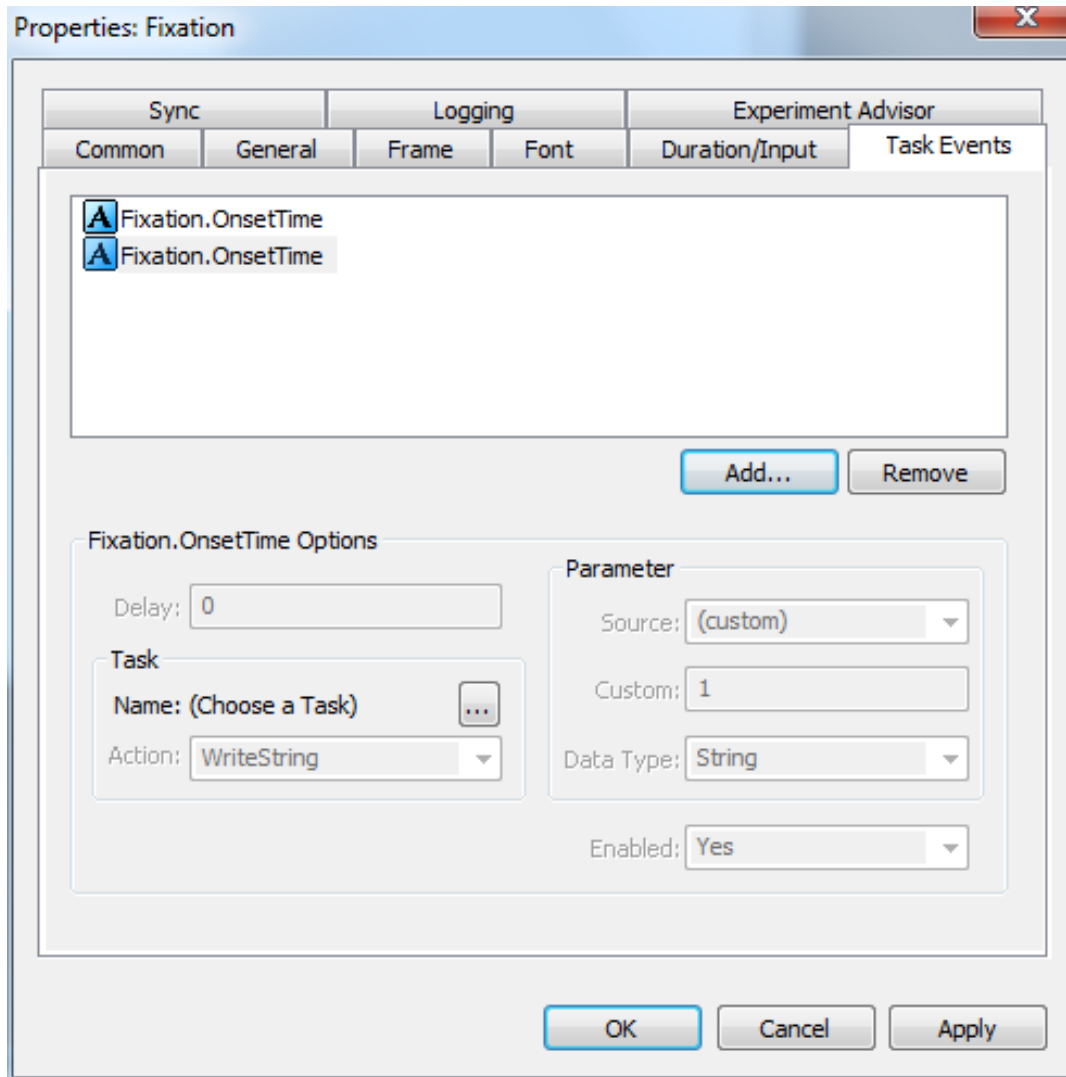
Modify the Task Event



Decide on a delay and trigger value (in the field “custom”). These particular settings will make E-Prime send a trigger, value of 1, 0 ms after the Fixation object starts.

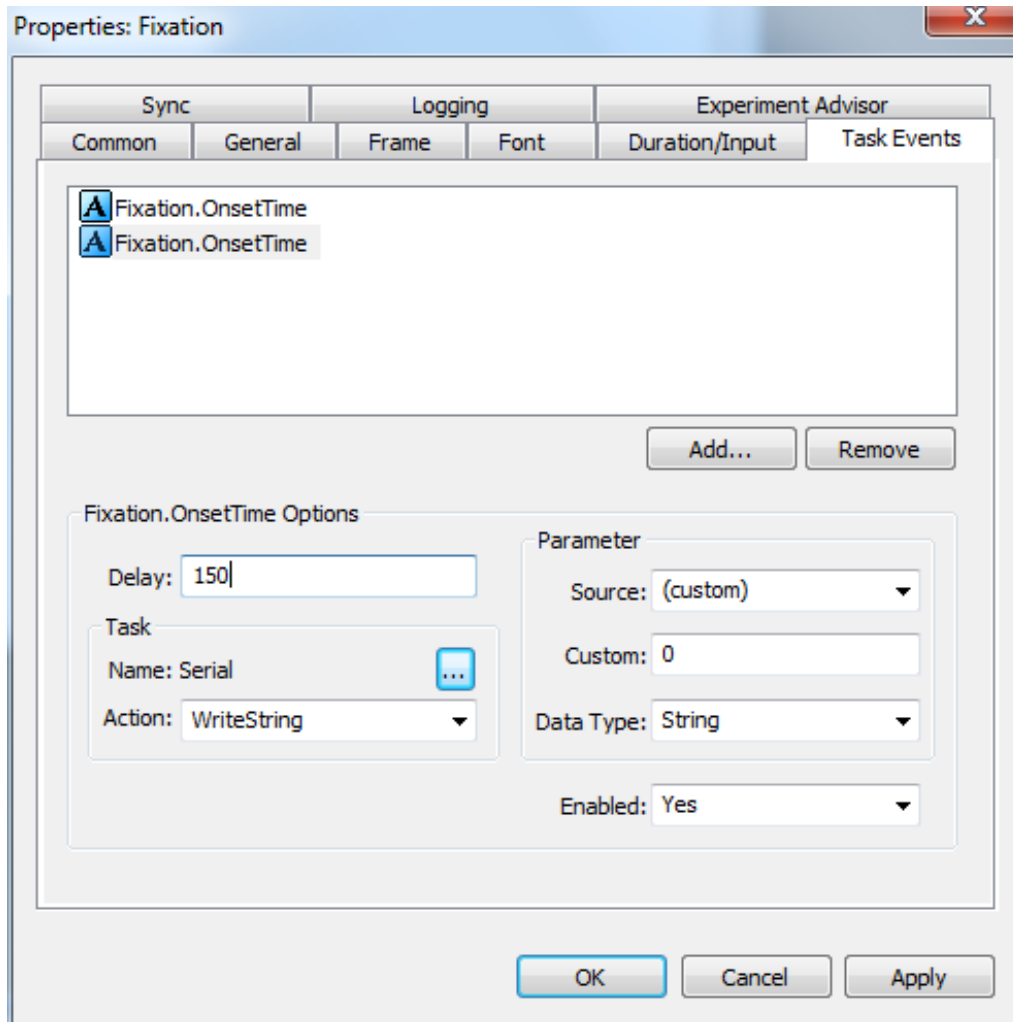
Click “Apply” when you are happy with yours settings

Adding a Trigger Off



Add another
“Fixation.
OnsetTime” object.
Again, click the “...”
to choose “Serial” as
your task device.

Adding a Trigger Off



These settings will turn your trigger off (custom: 0) 150 ms after the Fixation object starts. You must have a Trigger Off after every trigger. 150ms is a good delay time.

Click apply when you are happy with your settings

Trigger Hints

- Continue to add triggers in this fashion for every object that needs to be triggered.
- Your triggers will show up as vertical lines in your data
- Remember to use 1, 2, 4 & 8 as your trigger values. This value goes in the “custom” field. A value of “0” turns the trigger off.
- Contact maggieu@umich.edu with questions